



ITINERARY OUTLINE

Click on the blue links in the table below to see further information online

Day	Date	Location	Accommodation
01	07 Sep 2014	Nairobi	Safari Park Hotel - Deluxe Room (BB)
02	08 Sep 2014	Masai Mara Game Reserve	Mara Simba Lodge - Room (FB)
03	09 Sep 2014	Masai Mara Game Reserve	Mara Simba Lodge - Room (FB)
04	10 Sep 2014	Lake Nakuru National Park	Lake Nakuru Lodge - Room (FB)
05	11 Sep 2014	Amboseli National Park	Ol Tukai Lodge - Chalet (FB)
06	12 Sep 2014	Amboseli National Park	Ol Tukai Lodge - Chalet (FB)
07	13 Sep 2014	Lake Manyara National Park	Lake Manyara Serena Lodge - Standard Room (FB)
08	14 Sep 2014	Serengeti National Park	Serengeti Serena Safari Lodge - Room (FB)
09	15 Sep 2014	Serengeti National Park	Serengeti Serena Safari Lodge - Room (FB)
10	16 Sep 2014	Ngorongoro Crater	Ngorongoro Serena Lodge - Room (FB)
11	17 Sep 2014	Ngorongoro Crater	Ngorongoro Serena Lodge - Room (FB)
12	18 Sep 2014	Tarangire National Park	Tarangire Sopa Lodge - Room (FB)
13	19 Sep 2014		Day of Departure - (B)

BB = Bed and breakfast

FB = Breakfast, lunch, dinner

FI = Breakfast, lunch, dinner and drinks

HB = Breakfast and dinner

Cost includes	Cost excludes
Meet and greet services and airport and road transfers	International flights and visas
Free hot air balloon flight in the Masai Mara	Domestic flights not mentioned as included
English speaking driver-guides	Guide and lodge staff tips
Shared game drives in Kenya in a safari minibus with 7 window seats	Drinks unless mentioned as included (where stay is on FI basis)
Shared game drives in Tanzania in a 4x4 vehicle	Premium spirits, premium wines and champagne (even where stay is on FI basis)
All accommodation and meals as specified	Laundry (unless stay is on FI basis)
Laundry where stay is on FI basis	Telephone bill, and any items of a personal nature
All park fees and government taxes	Medical, evacuation or travel insurance



INFORMATION BOARD

CANCELLATION TERMS AND CONDITIONS

- ▶ All cancellations must be advised of in writing
Cancellation penalties:
- ▶ For cancellations made more than 60 days prior to start date: 30% cancellation penalty will apply (i.e. full deposit)
- ▶ For cancellations made between 45 and 60 days prior to departure date: 50% cancellation penalty will apply
- ▶ For cancellation made less than 45 days prior to departure date: 100% cancellation penalty will apply (i.e. the full booking cost)

INSURANCE

- ▶ African Ubuntu Safaris strongly insists that every traveller purchases comprehensive travel insurance. As the deposit is non-refundable, and cancellation penalties apply, insurance must be taken out which can cover you in the event of you needing to cancel your travel plans
- ▶ African Ubuntu Safaris will not be liable for any costs resulting from any traveller's failure to purchase sufficient travel insurance

DETAILED DAILY ITINERARY

Day 1**07 Sep 2014****Arrive in Nairobi**

After arriving in Kenya today at Nairobi International Airport on flight **KQ313** at **06h50 (flight on own arrangements)** you will be met and transferred to the **Safari Park Hotel** for **1 night** on a **bed and breakfast basis**.

Arrive: 07 Sep 2014 | Depart: 08 Sep 2014**1 night (breakfast)**

Safari Park Hotel

The Safari Park Hotel offers a wide selection of rooms, with en suite marble bathrooms, wooden polished floors, and antique African themed 4 poster beds and furniture, spread out in 9 blocks of 2 floors each. The rooms have private balconies overlooking the beautifully manicured gardens, and have large windows and enjoy natural light. They are equipped with a work desk, cabled and wireless internet access, satellite TV, and electronic safes. Amenities include tea and coffee making facilities, a refrigerated mini-bar, a hairdryer, European adapters, umbrellas and mosquito nets. The hotel has 24 hrs concierge, room, and laundry services.



Nairobi

Kenya's capital city has risen from a highland swampland called Ewaso Nai'beri – the place of cold – by the local Masai. When railway workers reached this area in 1899, they set up a basic camp and supply depot. The camp became a rustic village, and then a shanty town, which by 1907 was the capital of all of British East Africa. It was soon an important centre for the colony and a mecca for adventurers, hunters and travellers from all over the world. Modern Nairobi is still the safari capital of the Africa, and has become one of Africa's largest and most interesting cities.

**Day 2****08 Sep 2014****Nairobi ~ Masai Mara Game Reserve**

This morning you will join your small group and depart Nairobi for the Masai Mara Game Reserve, where you will have lunch at **Mara Simba Lodge** and an afternoon game drive. You will spend the next **2 nights** here in the Masai Mara with **full board**.

Arrive: 08 Sep 2014 | Depart: 10 Sep 2014**2 nights (all meals)**

Mara Simba Lodge

The Mara Simba lodge overlooks a dramatic bend of the Talek, a tributary of the Mara River. Stretching almost a kilometer along the river, the indigenous river banks and the landscaped gardens of the lodge grounds draw a great variety of birds and butterflies. The 84 guest rooms, decorated in Masai traditional style, are arranged in clusters of 6 banda built in natural wood and stone and comprise 60 twin rooms, 12 double, 4 double+single and 8 triple rooms, all with en suite showers. Each spacious room opens onto a private veranda with uninterrupted views across the river. Wide, well-lit pathways connect the public areas and rooms.

Masai Mara Game Reserve

It is no surprise that the Masai Mara ranks up near the top of most famous game reserves in the world. The land of the Mara is covered with herds of antelope, interspersed with prides of lions, journeys of giraffe, dazzles of zebra, and almost every other collective animal noun you can think of. The sightings are nothing short of fantastic, and it is definitely the park to visit to tick off your "wildlife of Africa" list. The scenery of the park is similar to the open plains of the Serengeti, although the Mara is dotted with more trees, and the game viewing is equal to, or can be better than, its southerly sister

**Day 3****09 Sep 2014****Masai Mara Game Reserve**

This morning you will be collected before sunrise and taken to the take-off point for your free hot air balloon flight over the Masai Mara. You will spend up to an hour floating high above the plains before landing and enjoying a champagne breakfast. The afternoon will be spent on a game drive.

**Day 4****10 Sep 2014****Masai Mara Game Reserve ~ Lake Nakuru National Park**

From the Masai Mara you will drive this morning to Lake Nakuru National Park, where you will have lunch and an afternoon game drive, making the most of the wonderful birdlife and rhino sightings. You will spend **1 night** at **Lake Nakuru Lodge** on a **full board basis**.

Arrive: 10 Sep 2014 | Depart: 11 Sep 2014**1 night (all meals)****Lake Nakuru Lodge**

Situated in the South East Ecological niche of the Lake Nakuru National Park, Lake Nakuru Lodge accommodates 180 guests in family rooms, deluxe cottages, or suites. The facility blends with its surroundings and animals often browse peacefully nearby. The Lodge prides itself on its high levels of comfort and service and its cuisine.

Lake Nakuru National Park

Accessed via a relatively short but scenic drive from Nairobi through the Great Rift Valley, Lake Nakuru National Park is a very popular destination, especially amongst bird lovers. Lake Nakuru is one of the best locations in East Africa to view rhinos, and is home to both the black and white species. While famous for the millions of flamingos which lined the lake shore, it is important to note that due to current water levels and changes to the lake over the past few years that these flamingos are no longer present in Lake Nakuru National Park. The flamingos have moved to various other lakes around the region.

**Day 5****11 Sep 2014****Lake Nakuru National Park ~ Amboseli National Park**

From Nakuru you will be taken to Lake Naivasha this morning for a boat trip, before you go via Nairobi and collect a picnic lunch and head south to the foot of Mount Kilimanjaro, to spend the next **2 nights** with **full board** at **Ol Tukai Lodge** in Amboseli National Park.

Arrive: 11 Sep 2014 | Depart: 13 Sep 2014**2 nights (all meals)****Ol Tukai Lodge**

Ol Tukai Lodge is located in the Amboseli National Park and provides 80 luxury chalet-style twin rooms all having private bath rooms and individual terraces. Each chalet ensures you an uninterrupted view of the wetlands or Mount Kilimanjaro. Lunch is served on the veranda and on most occasions elephants, zebra and buffalo can be spotted metres away from the fence. The restaurant serves a la carte menus as well as set buffets. Theme nights are held throughout the week and include barbecues and Swahili fish menus. Between meal times snacks and drinks are served at The Pool Bar



Amboseli National Park

The combination of masses of animals, diverse eco-systems, and the splendid views of Mount Kilimanjaro make Amboseli National Park high up on the must-see list of any Kenyan safari. With desert landscapes to lush green swampland, the scenery changes entirely during game drives, with new photo opportunities presenting themselves all the time. Amboseli is famous for its huge elephant herds, and is home to a remarkable concentration of species and birdlife, all the while being watched over by the highest peak in Africa.

**Day 6****12 Sep 2014****Amboseli National Park**

Today will be spent on morning and afternoon game drives inside Amboseli.

Day 7**13 Sep 2014****Amboseli National Park ~ Lake Manyara National Park**

Your safari continues into Tanzania today, as you drive to the Namanga Border Post, pass through immigrations, and meet your Tanzanian guide. You will continue to Arusha for lunch before departing for Lake Manyara for **1 night** with **full board** at **Lake Manyara Serena Lodge**.

Arrive: 13 Sep 2014 | Depart: 14 Sep 2014**1 night (all meals)**

Lake Manyara Serena Lodge

Lake Manyara Serena Safari Lodge stands high on the edge of a towering terracotta escarpment with panoramic views over Lake Manyara. Grouped around a central 'vanishing horizon' pool, this Lodge features a simple timbered reception area, which is accessed via a bridge over a small stream. Beyond the reception are the central dining room, bar and veranda, below which lies the pool. Dotted around the grounds, all with views over the lake, are a series of circular, white-washed 2 storey thatched 'rondavels', which house the rooms. Each spacious circular room has its own small veranda.

Lake Manyara National Park

Being a relatively small park, and with Lake Manyara taking up the majority of the area, Lake Manyara National Park can be covered easily on half-day game drives, but these drives are usually very rewarding despite their brevity. The scenery and birdlife are Lake Manyara's major attractions, with the lake being perfectly located to offer spectacular views along the Great Rift Valley.

**Day 8****14 Sep 2014****Lake Manyara National Park ~ Serengeti National Park**

Following a morning game drive in Lake Manyara National Park you will have lunch and then continue to the Serengeti National Park, to spend **2 nights** at **Serengeti Serena Safari Lodge** on a **full board basis**. You will be travelling through the Ngorongoro Conservation Area and you are likely to start spotting game well before you get into the park.



Ngorongoro Crater

A unique and fascinating game viewing destination, the Ngorongoro Crater is a must-see on any Tanzania safari. Being the world's largest intact caldera, and the result of a collapsed volcano thousands of years ago, the 260 square kilometres of crater floor hosts up to 25 000 animals at all times of year. This makes it one of the most dense wildlife areas in Africa, and allows for many memorable sightings.



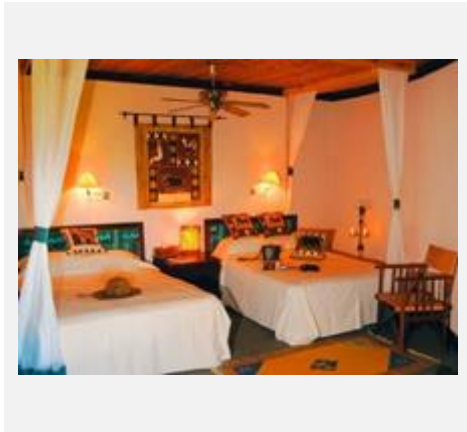
Day 11 **17 Sep 2014** **Ngorongoro Crater**

A major highlight awaits you this morning as you drive down the steep walls of the Crater to the floor below to spend the day on a game drive, enjoying a picnic lunch surrounded by wildlife.

Day 12 **18 Sep 2014** **Ngorongoro Crater ~ Tarangire National Park**

This morning you will drive to Tarangire National Park, where you will have lunch at **Tarangire Sopa Lodge** before spending the afternoon on a game drive. You will be in Tarangire for **1 night** on a **full board basis**.

Arrive: 18 Sep 2014 | Depart: 19 Sep 2014 **1 night (all meals)**



Tarangire Sopa Lodge

Tarangire Sopa Lodge provides 75 spacious rooms furnished with a mini bar and 2 queen size beds including mosquito nets. 4 of these rooms are suitable for the physically challenged. The Lodge lies hidden among the kopjes and surrounded by ancient baobab trees. Tarangire is the home of one of the greatest concentration of elephants in Africa, and showcases other game including the elusive leopard. Over 400 bird species can be spotted here as well. Some facilities on offer are a gift shop, swimming pool, laundry and a babysitting service.

Tarangire National Park

One of the best dry season parks in the region, from July through to October an enormous amount of wildlife is drawn inside Tarangire to access the water from the Tarangire River and the Silale Swamps, allowing for very rewarding game viewing experiences. The park is home to some of the largest elephant herds of East Africa, and the scenery is particularly popular for the wide open, Serengeti-like plains, decorated with enormous and commanding Baobab trees.





Day 13

19 Sep 2014

Day of Departure

With a game drive en route out of Tarangire you will continue back to Arusha, and from there drive back across the border to Kenya, arriving in Nairobi late in the afternoon. You will be taken for dinner in the city before being transferred to Jomo Kenyatta International Airport in time to board flight **KQ314** departing at **22h45 (flight on own arrangements)**.

End of Services

Thanks very much for confirming your travels with African Ubuntu Safaris. We know you will have a fantastic time, and look forward to hearing about it when you return!

Kind regards

African Ubuntu Safaris

www.africanubuntusafaris.com.au

Tel: +61 2 9877 6789

Mob: +61 423 813 805

For full terms and conditions please visit: <http://www.africanubuntusafaris.com.au/terms-and-conditions.html>