



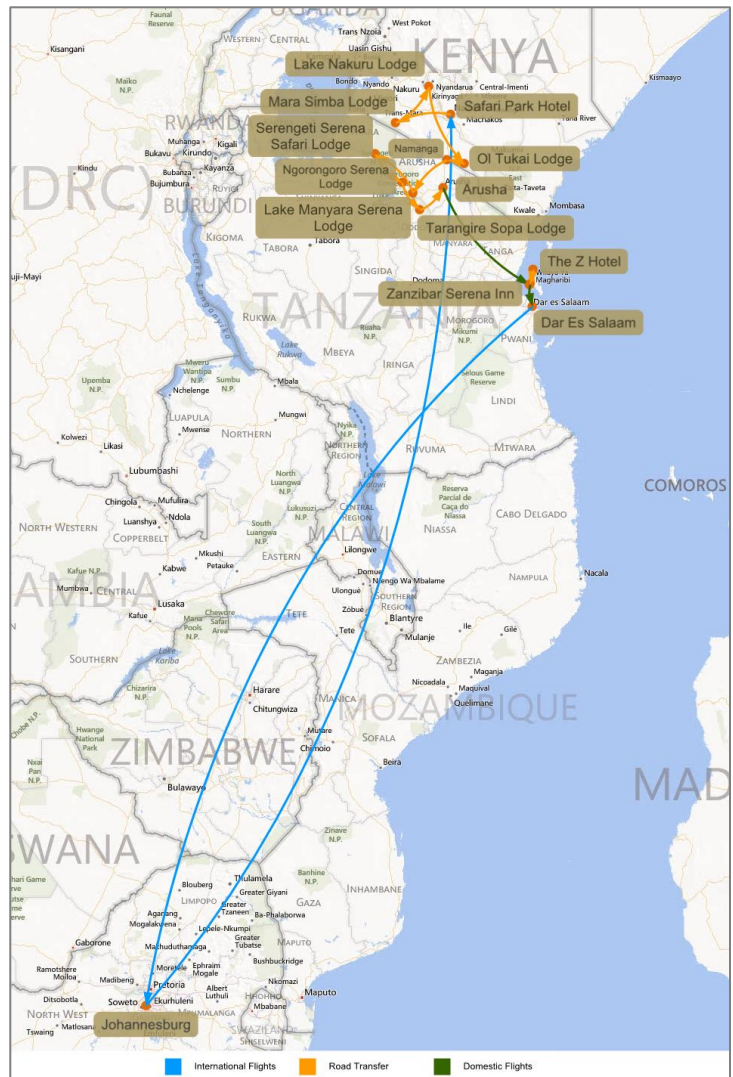
AFRICAN UBUNTU SAFARIS



Confirmation
Melanie and Christian
*17 Day Best of Kenya and Tanzania
with Zanzibar Safari*
10 - 27 Aug 2014

Thank you for booking with African Ubuntu Safaris

TOUR MAP





ITINERARY OUTLINE

Click on the blue links in the table below to see further information online

Day	Date	Location	Accommodation
01	10 Aug 2014	Nairobi	Safari Park Hotel - Deluxe Room (BB)
02	11 Aug 2014	Masai Mara Game Reserve	Mara Simba Lodge - Room (FB)
03	12 Aug 2014	Masai Mara Game Reserve	Mara Simba Lodge - Room (FB)
04	13 Aug 2014	Lake Nakuru National Park	Lake Nakuru Lodge - Room (FB)
05	14 Aug 2014	Amboseli National Park	Ol Tukai Lodge - Chalet (FB)
06	15 Aug 2014	Amboseli National Park	Ol Tukai Lodge - Chalet (FB)
07	16 Aug 2014	Lake Manyara National Park	Lake Manyara Serena Lodge - Room (FB)
08	17 Aug 2014	Serengeti National Park	Serengeti Serena Safari Lodge - Double Storey Rondavel (FB)
09	18 Aug 2014	Serengeti National Park	Serengeti Serena Safari Lodge - Double Storey Rondavel (FB)
10	19 Aug 2014	Ngorongoro Crater	Ngorongoro Serena Lodge - Room (FB)
11	20 Aug 2014	Ngorongoro Crater	Ngorongoro Serena Lodge - Room (FB)
12	21 Aug 2014	Tarangire National Park	Tarangire Sopa Lodge - Room (FB)
13	22 Aug 2014	Stone Town	Zanzibar Serena Inn - Standard Room (BB)
14	23 Aug 2014	Zanzibar	The Z Hotel - Roof Top Suite (BB)
15	24 Aug 2014	Zanzibar	The Z Hotel - Roof Top Suite (BB)
16	25 Aug 2014	Zanzibar	The Z Hotel - Roof Top Suite (BB)
17	26 Aug 2014		Day of Departure - (B)

BB = Bed and breakfast

FB = Breakfast, lunch, dinner

FI = Breakfast, lunch, dinner and drinks

HB = Breakfast and dinner

FLIGHTS

Day	Date	Route	Departure	Arrival
00	09 Aug 2014	SA7253 - Brisbane to Perth	17h30	21h25
00	09 Aug 2014	SA281 - Perth to Johannesburg	23h50	05h45
01	10 Aug 2014	SA184 - Johannesburg to Nairobi	10h10	15h15
13	22 Aug 2014	Arusha to Zanzibar	15h20	16h40
17	26 Aug 2014	PW421 - Zanzibar to Dar Es Salaam	12h15	12h45
17	26 Aug 2014	SA187 - Dar Es Salaam to Johannesburg	14h40	17h20
17	26 Aug 2014	SA280 - Johannesburg to Perth	22h25	13h25
18	27 Aug 2014	SA7254 - Perth to Brisbane	22h45	05h05



Cost includes	Cost excludes
Meet and greet services and airport and road transfers	Visas
Touring transport and game drives in Kenya on a shared basis in a safari minibus (with seven window seats) with an English speaking driver-guide	Domestic flights not mentioned as included
Game drives in Tanzania in a 4x4 with an English speaking driver-guide on shared basis	Guide and lodge staff tips
Flights as per the schedule above	Drinks unless mentioned as included (where stay is on FI basis)
All accommodation and meals as specified	Premium spirits, premium wines and champagne (even where stay is on FI basis)
Laundry where stay is on FI basis	Laundry (unless stay is on FI basis)
All park fees and government taxes	Telephone bill, and any items of a personal nature
	Medical, evacuation or travel insurance

INFORMATION BOARD

CANCELLATION TERMS AND CONDITIONS

- ▶ All cancellations must be advised of in writing
- Cancellation penalties:
- ▶ For cancellations made more than 60 days prior to start date: 30% cancellation penalty will apply (i.e. full deposit)
 - ▶ For cancellations made between 45 and 60 days prior to departure date: 50% cancellation penalty will apply
 - ▶ For cancellation made less than 45 days prior to departure date: 100% cancellation penalty will apply (i.e. the full booking cost)

INSURANCE

- ▶ African Ubuntu Safaris strongly insists that every traveller purchases comprehensive travel insurance. As the deposit is non-refundable, and cancellation penalties apply, insurance must be taken out which can cover you in the event of you needing to cancel your travel plans
- ▶ African Ubuntu Safaris will not be liable for any costs resulting from any traveller's failure to purchase sufficient travel insurance

DETAILED DAILY ITINERARY

09 Aug 2014

Depart Melbourne

You will make your way to Brisbane Airport in time to board flight **SA7253** leaving for Perth at **17h30** and landing there at **21h25**. You then connect on to flight **SA281** leaving for Johannesburg at **23h50**.

**Day 1****10 Aug 2014****Arrive in Nairobi**

You will land at Johannesburg at **05h05** and connect on to flight **SA184** leaving at **10h10** for Nairobi. After arriving at Jomo Kenyatta International in Nairobi at **15h15**, you will be met after passing through immigration formalities and transferred to the **Safari Park Hotel** where you will spend **2 nights** on a **bed and breakfast basis**.

Arrive: 10 Aug 2014 | Depart: 11 Aug 2014**1 night (breakfast)****Safari Park Hotel**

The Safari Park Hotel offers a wide selection of rooms, with en suite marble bathrooms, wooden polished floors, and antique African themed 4 poster beds and furniture, spread out in 9 blocks of 2 floors each, with private balconies overlooking the beautifully manicured gardens, and large windows providing natural light. They are equipped with a work desk, cabled and wireless internet access, satellite TV, and electronic safes. Amenities include tea and coffee making facilities, a refrigerated mini-bar, a hairdryer, European adapters, umbrellas and mosquito nets.

Nairobi

Kenya's capital city has risen from a highland swampland called by the Ewaso Nai'beri – the place of cold – by the local Masai. When railway workers reached this area in 1899, they set up a basic camp and supply depot. The camp became a rustic village, and then a shanty town, which by 1907 was the capital of all of British East Africa. It was soon an important centre for the colony and a mecca for adventurers, hunters and travellers from all over the world. Modern Nairobi is still the safari capital of the Africa, and has become one of Africa's largest and most interesting cities.

**Day 2****11 Aug 2014****Nairobi ~ Masai Mara Game Reserve**

This morning you will join your small group and depart Nairobi for the Masai Mara Game Reserve, where you will have an afternoon game drive before heading to your lodge for the night. You will spend the next **2 nights** at **Mara Simba Lodge** in the Masai Mara with **full board**.

Arrive: 11 Aug 2014 | Depart: 13 Aug 2014**2 nights (all meals)****Mara Simba Lodge**

The Mara Simba lodge overlooks a dramatic bend of the Talek, a tributary of the Mara River. Stretching almost a kilometer along the river, the indigenous river banks and the landscaped gardens of the lodge grounds draw a great variety of birds and butterflies. The 84 guest rooms, decorated in Masai traditional style, are arranged in clusters of 6 banda built in natural wood and stone and comprise 60 twin rooms, 12 double, 4 double+single and 8 triple rooms, all with en suite showers. Each spacious room opens onto a private veranda with uninterrupted views across the river.



Masai Mara Game Reserve

It is no surprise that the Masai Mara ranks up near the top of most famous game reserves in the world. The land of the Mara is covered with herds of antelope, interspersed with prides of lions, journeys of giraffe, dazzles of zebra, and almost every other collective animal noun you can think of. The sightings are nothing short of fantastic, and it is definitely the park to visit to tick off your "wildlife of Africa" list. The scenery of the park is similar to the open plains of the Serengeti, although the Mara is dotted with more trees, and the game viewing is equal to, or can be better than, its southerly sister



Day 3	12 Aug 2014	Masai Mara Game Reserve
--------------	--------------------	--------------------------------

You will be collected from your lodge before sunrise and driven to the launch point for your hot-air balloon safari over the Mara plains. After drifting for about an hour you will land and enjoy a champagne breakfast in the wilderness, before being driven back to your lodge to relax during the heat of the day. This afternoon you will join the group again and explore more of the reserve on a game drive.

Day 4	13 Aug 2014	Masai Mara Game Reserve ~ Lake Nakuru National Park
--------------	--------------------	--

From the Masai Mara you will drive this morning to Lake Nakuru National Park, where you will have an afternoon game drive, making the most of the wonderful birdlife and rhino sightings. You will spend **1 night** at **Lake Nakuru Lodge** on a **full board basis**.

Arrive: 13 Aug 2014 | Depart: 14 Aug 2014 **1 night (all meals)**



Lake Nakuru Lodge

Situated in the South East Ecological niche of the Lake Nakuru National Park, Lake Nakuru Lodge accommodates 180 guests in family rooms, deluxe cottages, or suites. The facility blends with its surroundings and animals often browse peacefully nearby. The Lodge prides itself on its high levels of comfort and service and its cuisine. The spacious logged Mama Nikki bar, or the cool upstairs Rhino Paddock Cocktail Bar overlooking the lake and the enticing blue swimming pool can be particularly inviting.

Lake Nakuru National Park

Accessed via a relatively short but scenic drive from Nairobi through the Great Rift Valley, Lake Nakuru National Park is a very popular destination, especially amongst bird lovers. Lake Nakuru is one of the best locations in East Africa to view rhinos, and is home to both the black and white species. While famous for the millions of flamingos which lined the lake shore, it is important to note that due to current water levels and changes to the lake over the past few years that these flamingos are no longer present in Lake Nakuru National Park. The flamingos have moved to various other lakes around the region.





Day 5	14 Aug 2014	Lake Nakuru National Park ~ Amboseli National Park
--------------	--------------------	---

After an early breakfast you drive to Lake Naivasha for a boat ride, then proceed to Nairobi, collect a picnic lunch and head south towards Amboseli at the foot of Mount Kilimanjaro, arriving at your lodge by late afternoon. You spend the next **2 nights** at **OI Tukai Lodge** with **full board**.

Arrive: 14 Aug 2014 | Depart: 16 Aug 2014

2 nights (all meals)



OI Tukai Lodge

OI Tukai Lodge is located in the Amboseli National Park and provides 80 luxury chalet-style twin rooms all having private bath rooms and individual terraces. Each chalet ensures you an uninterrupted view of the wetlands or Mount Kilimanjaro. Lunch is served on the veranda and on most occasions elephants, zebra and buffalo can be spotted metres away from the fence. The restaurant serves a la carte menus as well as set buffets.

Amboseli National Park

The combination of masses of animals, diverse eco-systems, and the splendid views of Mount Kilimanjaro make Amboseli National Park high up on the must-see list of any Kenyan safari. With desert landscapes to lush green swampland, the scenery changes entirely during game drives, with new photo opportunities presenting themselves all the time. Amboseli is famous for its huge elephant herds, and is home to a remarkable concentration of species and birdlife.



Day 6	15 Aug 2014	Amboseli National Park
--------------	--------------------	-------------------------------

Today will be spent on morning and afternoon game drives inside Amboseli.

Day 7	16 Aug 2014	Amboseli National Park ~ Lake Manyara
--------------	--------------------	--

Your journey continues into Tanzania today, as you drive to the Namanga Border Post, pass through immigrations, and meet your Tanzanian guide. You will continue to Arusha for lunch before departing for Lake Manyara for **1 night** at **Lake Manyara Serena Lodge** with **full board**.

Arrive: 16 Aug 2014 | Depart: 17 Aug 2014

1 night (all meals)



Lake Manyara Serena Lodge

Lake Manyara Serena Safari Lodge stands high on the edge of an escarpment with panoramic views over Lake Manyara. Grouped around a central 'vanishing horizon' pool, this Lodge features a simple timbered reception area, built in traditional African style, which is accessed via a bridge over a small stream. Beyond the reception are the central dining room, bar and veranda, below which lies the pool. Dotted around the grounds, all with views over the lake, are a series of circular, white-washed 2 storey thatched 'rondavels', which house the rooms. Each spacious circular room has its own small veranda.



Lake Manyara National Park

Being a relatively small park, and with Lake Manyara taking up the majority of the area, Lake Manyara National Park can be covered easily on half-day game drives, but these drives are usually very rewarding despite their brevity. The scenery and birdlife are Lake Manyara's major attractions, with the lake being perfectly located to offer spectacular views along the Great Rift Valley.

**Day 8****17 Aug 2014****Lake Manyara ~ Serengeti National Park**

Following a morning game drive you will continue to the Serengeti National Park, to spend **2 nights** at **Serengeti Serena Safari Lodge** on a **full board basis**, with morning and afternoon game drives on the Serengeti plains.

Arrive: 17 Aug 2014 | Depart: 19 Aug 2014**2 nights (all meals)**

Serengeti Serena Safari Lodge

Located adjacent to the famous Serengeti National Park Western Corridor and Grumeti River, set high on the saddle of a tree-clad ridge, commanding panoramic views, the lodge has been designed to blend into the landscape. Accommodation is in a series of two storey domed thatched 'rondavels,' each stone built, and consisting of a private balcony and entrance, spacious bedroom, natural stone bathroom and intricately carved furniture. Room facilities include telephone and WiFi, laundry, valet and shoeshine services, mineral water and toiletries, bathrobe and slippers, snacks and drinks room service, safe and hairdryers (from reception), and 24-hour medical service. The lodge also offers children's meals, children's beds, and babysitting services.

Serengeti National Park

The word "Siringit" means "endless plains", and this is understandably from where the Serengeti National Park takes its name. The iconic, endless, golden plains of Africa are nowhere more evident than within this national park, as they stretch off into eternity, dotted throughout with thousands of animals. Located in the north-west corner of Tanzania, alongside Lake Victoria, the Serengeti has earned its place as one of the world's most famous wildlife areas.

**Day 9****18 Aug 2014****Serengeti National Park**

You will spend this full day on morning and afternoon game drives in the Serengeti National Park.

Day 10**19 Aug 2014****Serengeti National Park ~ Ngorongoro Crater**

This morning you will take a game drive back out of the Serengeti to the Ngorongoro Crater, where you will spend the next **2 nights** with **full board** at **Ngorongoro Serena Lodge** perched right on the rim.



Arrive: 19 Aug 2014 | Depart: 21 Aug 2014

2 nights (all meals)



Ngorongoro Serena Lodge

Located adjacent to the famous Serengeti National Park Western Corridor and Grumeti River, set high on the saddle of a tree-clad ridge, commanding panoramic views, the lodge has been designed to blend into the landscape. Accommodation is in a series of two storey domed thatched 'rondavels,' each stone built, and consisting of a private balcony and entrance, spacious bedroom, natural stone bathroom and intricately carved furniture. Room facilities include telephone and WiFi, laundry, valet and shoeshine services, mineral water and toiletries, bathrobe and slippers, snacks and drinks room service, safe and hairdryers (from reception), and 24-hour medical service.

Ngorongoro Crater

A unique and fascinating game viewing destination, the Ngorongoro Crater is a must-see on any Tanzania safari. Being the world's largest intact caldera, and the result of a collapsed volcano thousands of years ago, the 260 square kilometres of crater floor hosts up to 25 000 animals at all times of year. This makes it one of the most dense wildlife areas in Africa, and allows for many memorable sightings.



Day 11	20 Aug 2014	Ngorongoro Crater
---------------	--------------------	--------------------------

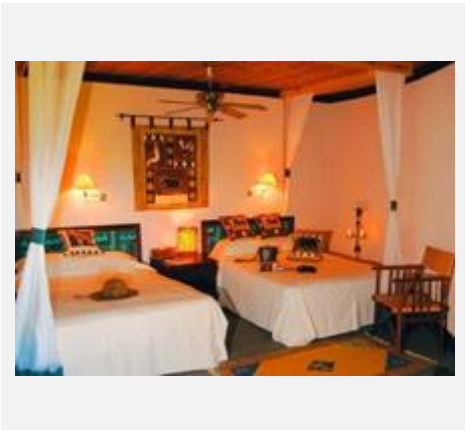
A major highlight awaits you this morning as you drive down the steep walls of the Crater to the floor below to spend the day on a game drive, enjoying a picnic lunch surrounded by wildlife.

Day 12	21 Aug 2014	Ngorongoro Crater ~ Tarangire National Park
---------------	--------------------	--

This morning you will drive to Tarangire National Park, where you will have lunch at **Tarangire Sopa Lodge** before spending the afternoon on a game drive. You will be in Tarangire for **1 night** on a **full board basis**.

Arrive: 21 Aug 2014 | Depart: 22 Aug 2014

1 night (all meals)



Tarangire Sopa Lodge

Tarangire Sopa Lodge provides 75 spacious rooms furnished with a mini bar and 2 queen size beds including mosquito nets. 4 of these rooms are suitable for the physically challenged. The Lodge lies hidden among the kopjes and surrounded by ancient baobab trees. Tarangire is the home of one of the greatest concentration of elephants in Africa, and showcases other game including the elusive leopard. Over 400 bird species can be spotted here as well. Some facilities on offer are a gift shop, swimming pool, laundry and a babysitting service.



Tarangire National Park

One of the best dry season parks in the region, from July through to October an enormous amount of wildlife is drawn inside Tarangire to access the water from the Tarangire River and the Silale Swamps, allowing for very rewarding game viewing experiences. The park is home to some of the largest elephant herds of East Africa, and the scenery is particularly popular for the wide open, Serengeti-like plains, decorated with enormous and commanding Baobab trees.



Day 13

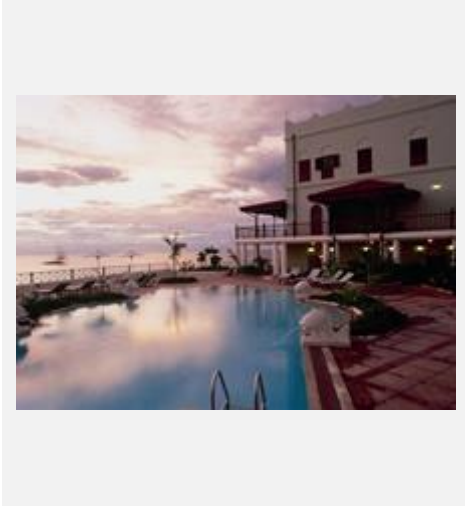
22 Aug 2014

Tarangire National Park ~ Stone Town

This morning you will leave Tarangire behind and drive back to Arusha where you will have lunch. After lunch you will be transferred to Arusha Airport in time to board flight **PW421** leaving for Zanzibar at **12h15**. On arrival in Zanzibar you will be met and transferred to the Zanzibar Serena Inn for **1 night** on a **bed and breakfast basis**.

Arrive: 22 Aug 2014 | Depart: 23 Aug 2014

1 night (breakfast)



Zanzibar Serena Inn

Idyllically situated on the sea-front of ancient Stone Town, and flanked by an exotic mix of sultan's palaces, Portuguese forts, ancient dhow harbours, and bright bazaars, the Zanzibar Serena Inn is a haven of tranquillity and opulence amongst the bustle of one of Africa's most ancient and most enchanting towns. A member of the prestigious Small Luxury Hotels of the World, the inn has been styled to represent the epitome of Swahili style, ethnic elegance and Arabic opulence. Adorned with arched niches, antique plates and brass lamps, and featuring traditionally carved furniture with basket weave and ceramic inlay, the rooms are predominantly royal blue and white.

Stone Town

The capital of Zanzibar is Zanzibar Town, in which Stone Town is a bustling, energetic and fascinating ancient part. With narrow mazes as streets, and intricately carved doors decorating the white-washed buildings, Stone Town invites you to explore its inner zones, and many an hour can be spent taking it all in. The sights and sounds, and the spicy smells, somehow remind you of a time long ago, and on exiting the web of alleys you feel as if you have left behind another world in another age.



Day 14

23 Aug 2014

Stone Town ~ Zanzibar

You will be collected from your hotel today and transferred to the northern tip of the island to spend the next **3 nights** relaxing at **The Z Hotel** on a **bed and breakfast basis**.



Arrive: 23 Aug 2014 | Depart: 26 Aug 2014

3 nights (breakfast)



The Z Hotel

This chic, boutique hotel situated in a secluded plot on the corner of an idyllic beach in Nungwi, is located on the northern tip of Zanzibar. It blends elegant, contemporary design with traditional Zanzibari features to create a unique cool and relaxing environment. Set in a lush, tropical garden with direct access to the white powder beaches and warm waters of the Indian Ocean, the Z hotel has been finished to a high specification by an international team of architects and interior designers. There are 6 room designs, some having private decks over the sea.

Zanzibar
The Zanzibar Archipelago has lured travellers to its pristine, white beaches for centuries. The main island of Zanzibar (correctly named Unguja), has a plethora of accommodation options, ranging from rustic beach bungalows to large and glitzy resorts, and can offer something to everyone's taste. Sandy beaches run the length of the coast, shaded by green palm trees, and caressed by turquoise waters.



Day 15 & 16 **24 & 25 Aug 2014** **Zanzibar**

These 2 full days will be spent chilling out on the beach, or taking part in some of the numerous activities available on the island.

Day 17 **26 Aug 2014** **Depart Zanzibar**

You will be collected from your hotel today and transferred back to Zanzibar Airport where you will be dropped off in time for your flight **PW421** at **12h15** to Dar Es Salaam, landing at **12h45**. You will then board flight **SA187** flying to Johannesburg at **14h40**. In Johannesburg you will connect with your outward bound flight **SA280** back to Perth, departing at **22h25**

27 Aug 2014 **Travel Day**

After landing in Perth at **13h25**, you will connect with flight **SA7256** flying to Melbourne at **17h00** and landing at **20h35**.

End of Services

Thanks very much for confirming your travels with African Ubuntu Safaris. We know you will have a fantastic time, and look forward to hearing about it when you return!

Kind regards

African Ubuntu Safaris

www.africanubuntusafaris.com.au

Tel: +61 2 9877 6789

Mob: +61 423 813 805

For full terms and conditions please visit: <http://www.africanubuntusafaris.com.au/terms-and-conditions.html>