



# AFRICAN UBUNTU SAFARIS



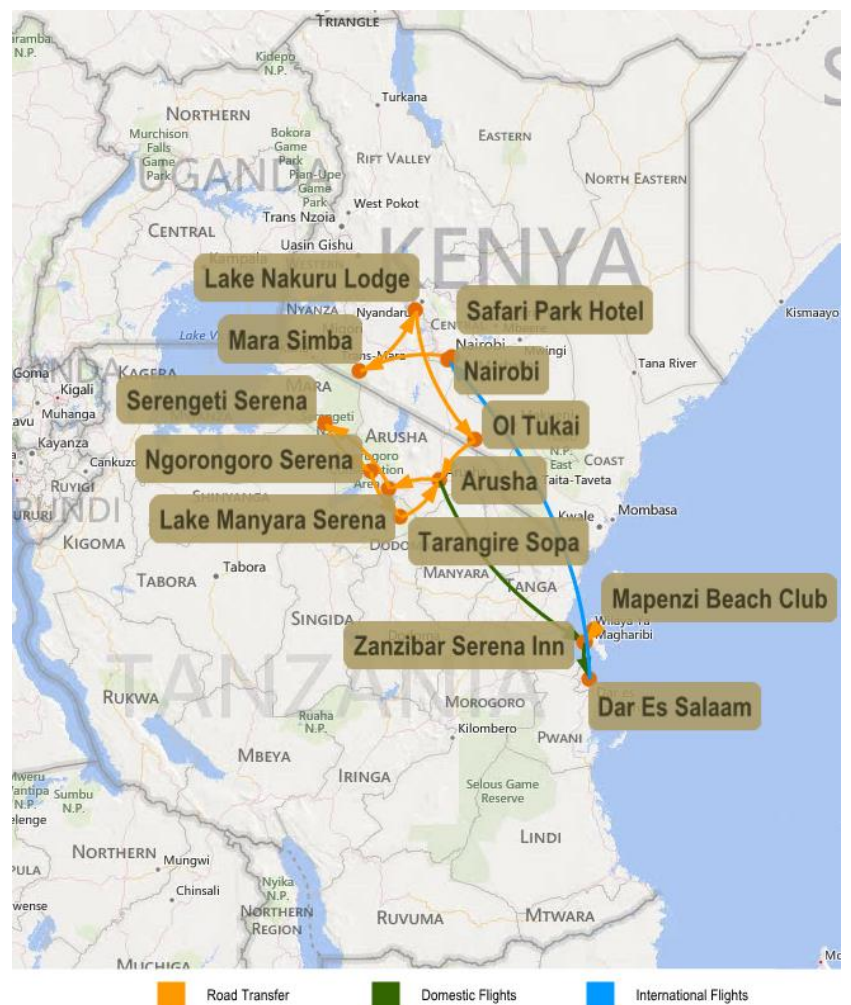
## Confirmation

Debbie and Courtney

*17 Day Best of Kenya and Tanzania  
Safari with Zanzibar Extension  
01 - 17 Feb 2015*

*Thank you for confirming with African Ubuntu Safaris*

### Tour Map





## ITINERARY OUTLINE

Click on the blue links in the table below to see further information online

Day	Date	Location	Accommodation
01	01 Feb 2015	Nairobi	<a href="#">Safari Park Hotel</a> - Deluxe Room (BB)
02	02 Feb 2015	<a href="#">Masai Mara Game Reserve</a>	<a href="#">Mara Simba Lodge</a> - Room (FB)
03	03 Feb 2015	<a href="#">Masai Mara Game Reserve</a>	<a href="#">Mara Simba Lodge</a> - Room (FB)
04	04 Feb 2015	<a href="#">Lake Nakuru National Park</a>	<a href="#">Lake Nakuru Lodge</a> - Room (FB)
05	05 Feb 2015	<a href="#">Amboseli National Park</a>	<a href="#">Ol Tukai Lodge</a> - Chalet (FB)
06	06 Feb 2015	<a href="#">Amboseli National Park</a>	<a href="#">Ol Tukai Lodge</a> - Chalet (FB)
07	07 Feb 2015	<a href="#">Lake Manyara National Park</a>	<a href="#">Lake Manyara Serena Lodge</a> - Room (FB)
08	08 Feb 2015	<a href="#">Serengeti National Park</a>	<a href="#">Serengeti Serena Safari Lodge</a> - Rondavel (FB)
09	09 Feb 2015	<a href="#">Serengeti National Park</a>	<a href="#">Serengeti Serena Safari Lodge</a> - Rondavel (FB)
10	10 Feb 2015	<a href="#">Ngorongoro Crater</a>	<a href="#">Ngorongoro Serena Lodge</a> - Room (FB)
11	11 Feb 2015	<a href="#">Ngorongoro Crater</a>	<a href="#">Ngorongoro Serena Lodge</a> - Room (FB)
12	12 Feb 2015	<a href="#">Tarangire National Park</a>	<a href="#">Tarangire Sopa Lodge</a> - Room (FB)
13	13 Feb 2015	<a href="#">Zanzibar</a>	<a href="#">Mapenzi Beach Club</a> - Deluxe Beach Front Room (FI)
14	14 Feb 2015	<a href="#">Zanzibar</a>	<a href="#">Mapenzi Beach Club</a> - Deluxe Beach Front Room (FI)
15	15 Feb 2015	<a href="#">Zanzibar</a>	<a href="#">Mapenzi Beach Club</a> - Deluxe Beach Front Room (FI)
16	16 Feb 2015	Stone Town	<a href="#">Zanzibar Serena Inn</a> - Standard Room (BB)
17	17 Feb 2015		Day of Departure - (B)

BB = Bed and breakfast

FB = Breakfast, lunch, dinner

FI = Breakfast, lunch, dinner and drinks

## FLIGHTS

Day	Date	Route	Depart	Arrive
	29 Jan 2015	EY455 - Sydney to Abu Dhabi	21h50	05h25
01	01 Feb 2015	EY641 - Abu Dhabi to Nairobi	09h30	13h40
13	13 Feb 2015	ZanAir - Arusha to Zanzibar	14h30	15h45
17	17 Feb 2015	Coastal Aviation - Zanzibar to Dar Es Salaam	08h00	08h30
17	17 Feb 2015	PW4481 - Dar Es Salaam to Nairobi	10h25	11h45
17	17 Feb 2015	EY642 - Nairobi to Abu Dhabi	14h30	20h25
	18 Feb 2015	EY454 - Abu Dhabi to Sydney	21h50	18h45



Cost includes	Cost excludes
Meet and greet services and airport and road transfers	International flights and visas
Free hot air balloon flight in the Masai Mara	Domestic flights not mentioned as included
English speaking driver-guides	Guide and lodge staff tips
Shared game drives in Kenya in a safari minibus with guaranteed window seats	Drinks unless mentioned as included (where stay is on FI basis)
Shared game drives in Tanzania in a 4x4 vehicle	Premium spirits, premium wines and champagne (even where stay is on FI basis)
Flights as in the schedule above	Laundry (unless stay is on FI basis)
All accommodation and meals as specified	Telephone bill, and any items of a personal nature
Laundry where stay is on FI basis	Medical, evacuation or travel insurance
All park fees and government taxes	

## INFORMATION BOARD

### CANCELLATION TERMS AND CONDITIONS

- ▶ All cancellations must be advised of in writing

#### Cancellation penalties:

- ▶ For cancellation made less than 45 days prior to departure date: 100% cancellation penalty will apply (i.e. the full booking cost)

### INSURANCE

- ▶ African Ubuntu Safaris strongly insists that every traveller purchases comprehensive travel insurance. As the deposit is non-refundable, and cancellation penalties apply, insurance must be taken out which can cover you in the event of you needing to cancel your travel plans
- ▶ African Ubuntu Safaris will not be liable for any costs resulting from any traveller's failure to purchase sufficient travel insurance

## DETAILED DAILY ITINERARY

<b>Day 1</b>	<b>01 Feb 2015</b>	<b>Depart Sydney</b>
--------------	--------------------	----------------------

You will fly from Sydney on flight **EY455** at **21h50** and arrive in Abu Dhabi at **05h25** on Friday January 30.

<b>Day 1</b>	<b>01 Feb 2015</b>	<b>Arrive in Nairobi</b>
--------------	--------------------	--------------------------

You will board flight **EY641** in Abu Dhabi, flying to Nairobi at **09h30**. On arrival in Kenya at Jomo Kenyatta International Airport at **13h40** you will be met after completing entry formalities and transferred to the **Sarova Stanley Hotel** to spend **1 night** on a **bed and breakfast basis**.



Arrive: 01 Feb 2015 | Depart: 02 Feb 2015

1 night (breakfast)

**Safari Park Hotel**

The Safari Park Hotel offers a wide selection of rooms, with en suite marble bathrooms, wooden polished floors, and antique African themed 4 poster beds and furniture, spread out in 9 blocks of 2 floors each. The rooms have private balconies overlooking the beautifully manicured gardens, and have large windows and enjoy natural light. They are equipped with a work desk, cabled and wireless internet access, satellite TV, and electronic safes. Amenities include tea and coffee making facilities, a refrigerated mini-bar, a hairdryer, European adapters, umbrellas and mosquito nets. The hotel has 24 hrs concierge, room, and laundry services.

**Nairobi**

Kenya's capital city has risen from a highland swampland called Ewaso Nai'beri – the place of cold – by the local Masai. When railway workers reached this area in 1899, they set up a basic camp and supply depot. The camp became a rustic village, and then a shanty town, which by 1907 was the capital of all of British East Africa. It was soon an important centre for the colony and a mecca for adventurers, hunters and travellers from all over the world. Modern Nairobi is still the safari capital of the Africa, and has become one of Africa's largest and most interesting cities.

**Day 2****02 Feb 2015****Nairobi ~ Masai Mara Game Reserve**

This morning you will join your small group and depart Nairobi for the Masai Mara Game Reserve, where you will have an afternoon game drive before heading to your lodge for the night. You will spend the next **2 nights** with **full board** at **Mara Simba Lodge** in the Masai Mara.

Arrive: 02 Feb 2015 | Depart: 04 Feb 2015

2 nights (all meals)

**Mara Simba Lodge**

The Mara Simba lodge overlooks a dramatic bend of the Talek, a tributary of the Mara River. Stretching almost a kilometer along the river, the indigenous river banks and the landscaped gardens of the lodge grounds draw a great variety of birds and butterflies. The 84 guest rooms, decorated in Masai traditional style, are arranged in clusters of 6 banda built in natural wood and stone and comprise 60 twin rooms, 12 double, 4 double+single and 8 triple rooms, all with en suite showers. Each spacious room opens onto a private veranda with uninterrupted views across the river. Wide, well-lit pathways connect the public areas and rooms.



### Masai Mara Game Reserve

It is no surprise that the Masai Mara ranks up near the top of most famous game reserves in the world. The land of the Mara is covered with herds of antelope, interspersed with prides of lions, journeys of giraffe, dazzles of zebra, and almost every other collective animal noun you can think of. The sightings are nothing short of fantastic, and it is definitely the park to visit to tick off your "wildlife of Africa" list. The scenery of the park is similar to the open plains of the Serengeti, although the Mara is dotted with more trees, and the game viewing is equal to, or can be better than, its southerly sister



<b>Day 3</b>	<b>03 Feb 2015</b>	<b>Masai Mara Game Reserve</b>
--------------	--------------------	--------------------------------

This morning you will be collected before sunrise and taken to the take-off point for your free hot air balloon flight over the Masai Mara. You will spend up to an hour floating high above the plains before landing and enjoying a champagne breakfast. The afternoon will be spent on a game drive.

<b>Day 4</b>	<b>04 Feb 2015</b>	<b>Masai Mara Game Reserve ~ Lake Nakuru National Park</b>
--------------	--------------------	--

From the Masai Mara you will drive this morning to Lake Nakuru National Park, where you will have an afternoon game drive, making the most of the wonderful birdlife and rhino sightings. You will spend **1 night** at **Lake Nakuru Lodge** on a **full board basis**.

**Arrive: 04 Feb 2015 | Depart: 05 Feb 2015** **1 night (all meals)**



### Lake Nakuru Lodge

Situated in the South East Ecological niche of the Lake Nakuru National Park, Lake Nakuru Lodge accommodates 180 guests in family rooms, deluxe cottages, or suites. The facility blends with its surroundings and animals often browse peacefully nearby. The Lodge prides itself on its high levels of comfort and service and its cuisine. The spacious logged Mama Nikki bar, or the cool upstairs Rhino Paddock Cocktail Bar overlooking the lake and the enticing blue swimming pool, can be particularly inviting.

### Lake Nakuru National Park

Accessed via a relatively short but scenic drive from Nairobi through the Great Rift Valley, Lake Nakuru National Park is a very popular destination, especially amongst bird lovers. Lake Nakuru is one of the best locations in East Africa to view rhinos, and is home to both the black and white species. While famous for the millions of flamingos which lined the lake shore, it is important to note that due to current water levels and changes to the lake over the past few years that these flamingos are no longer present in Lake Nakuru National Park. The flamingos have moved to various other lakes around the region.





<b>Day 5</b>	<b>05 Feb 2015</b>	<b>Lake Nakuru National Park ~ Amboseli National Park</b>
--------------	--------------------	---

From Nakuru you will be taken to Lake Naivasha this morning for a boat trip, before you journey to the foot of Mount Kilimanjaro, to spend the next **2 nights** at **Ol Tukai Lodge** in Amboseli National Park on a **full board basis**.

**Arrive: 05 Feb 2015 | Depart: 07 Feb 2015** **2 nights (all meals)**



### Ol Tukai Lodge

Ol Tukai Lodge is located in the Amboseli National Park and provides 80 luxury chalet-style twin rooms all having private bath rooms and individual terraces. Each chalet ensures you an uninterrupted view of the wetlands or Mount Kilimanjaro. The restaurant serves a la carte menus as well as set buffets. Theme nights are held throughout the week and include barbecues and Swahili fish menus. Between meal times snacks and drinks are served at The Pool Bar. The open-air Elephant Bar has a roof level deck offering a panoramic vista.

### Amboseli National Park

The combination of masses of animals, diverse eco-systems, and the splendid views of Mount Kilimanjaro make Amboseli National Park high up on the must-see list of any Kenyan safari. With desert landscapes to lush green swampland, the scenery changes entirely during game drives, with new photo opportunities presenting themselves all the time. Amboseli is famous for its huge elephant herds, and is home to a remarkable concentration of species and birdlife, all to the backdrop of the highest peak in Africa.



<b>Day 6</b>	<b>06 Feb 2015</b>	<b>Amboseli National Park</b>
--------------	--------------------	-------------------------------

Today will be spent on morning and afternoon game drives inside Amboseli.

<b>Day 7</b>	<b>07 Feb 2015</b>	<b>Amboseli National Park ~ Lake Manyara National Park</b>
--------------	--------------------	--

Your journey continues into Tanzania today, as you drive to the Namanga Border Post, pass through immigrations, and meet your Tanzanian guide. You will continue to Arusha for lunch before departing for Lake Manyara for **1 night** at with **full board** at **Lake Manyara Serena Lodge**.

**Arrive: 07 Feb 2015 | Depart: 08 Feb 2015** **1 night (all meals)**



### Lake Manyara Serena Lodge

Lake Manyara Serena Safari Lodge stands high on the edge of a towering terracotta escarpment with panoramic views over Lake Manyara. Beyond the timbered reception, accessed via a bridge over a small stream, are the central dining room, bar and veranda, grouped around a "vanishing horizon" pool below. Dotted around the grounds, all with views over the lake, are white-washed 2 storey thatched 'rondavels', which house the spacious circular en suite rooms, each with its own small veranda.



## Lake Manyara National Park

Being a relatively small park, and with Lake Manyara taking up the majority of the area, Lake Manyara National Park can be covered easily on half-day game drives, but these drives are usually very rewarding despite their brevity. The scenery and birdlife are Lake Manyara's major attractions, with the lake being perfectly located to offer spectacular views along the Great Rift Valley.

**Day 8****08 Feb 2015****Lake Manyara National Park ~ Serengeti National Park**

Following a morning game drive you will continue to the Serengeti National Park, to spend **2 nights** at **Serengeti Serena Safari Lodge** on a **full board basis**, with morning and afternoon game drives on the Serengeti plains.

**Arrive: 08 Feb 2015 | Depart: 10 Feb 2015****2 nights (all meals)**

### Serengeti Serena Safari Lodge

Located adjacent to the famous Serengeti National Park Western Corridor and Grumeti River, the lodge set high on the saddle of a tree-clad ridge, commanding panoramic views. Accommodation is in a series of stone built two storey domed thatched 'rondavels,' each consisting of a private balcony and entrance, spacious bedroom, natural stone bathroom and intricately carved furniture. Room facilities include telephone and WiFi, laundry, valet and shoeshine services, mineral water and toiletries, bathrobe and slippers, snacks and drinks room service, safe and hairdryers (from reception), and 24-hour medical service.

## Serengeti National Park

The word "Siringit" means "endless plains", and this is understandably from where the Serengeti National Park takes its name. The iconic, endless, golden plains of Africa are nowhere more evident than within this national park, as they stretch off into eternity, dotted throughout with thousands of animals. Located in the north-west corner of Tanzania, alongside Lake Victoria, the Serengeti has earned its place as one of the world's most famous wildlife areas.

**Day 9****09 Feb 2015****Serengeti National Park**

You will spend this full day on morning and afternoon game drives in the Serengeti National Park, searching for the best vantage points to observe the diverse wildlife.

**Day 10****10 Feb 2015****Serengeti National Park ~ Ngorongoro Crater**

This morning you will take a game drive back out of the Serengeti to the Ngorongoro Crater, where you will spend the next **2 nights** with **full board** at **Ngorongoro Serena Lodge** perched right on the rim.



Arrive: 10 Feb 2015 | Depart: 12 Feb 2015

2 nights (all meals)



### Ngorongoro Serena Lodge

The Ngorongoro Serena Lodge clings to the rim of the magnificent Ngorongoro Crater. Long and low, the lodge is built from local river stone and camouflaged with indigenous vines. Linked by arched stone passages and timbered decks, and lit by flaring torches, the lodge and rooms are decorated with stylized prehistoric cave paintings. Strung around the Crater rim, each with its own rock enclosed balcony, the 75 rooms feature brass lamps, embossed leather headboards, wildwood mirrors, and Masai carvings.

### Ngorongoro Crater

A unique and fascinating game viewing destination, the Ngorongoro Crater is a must-see on any Tanzania safari. Being the world's largest intact caldera, and the result of a collapsed volcano thousands of years ago, the 260 square kilometres of crater floor hosts up to 25 000 animals at all times of year. This makes it one of the most dense wildlife areas in Africa, and allows for many memorable sightings.



<b>Day 11</b>	<b>11 Feb 2015</b>	<b>Ngorongoro Crater</b>
---------------	--------------------	--------------------------

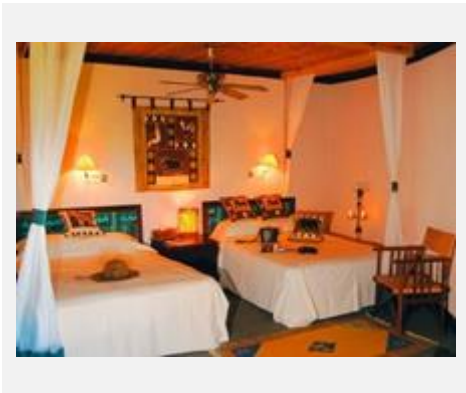
A major highlight awaits you this morning as you drive down the steep walls of the Crater to the floor below to spend the day on a game drive, enjoying a picnic lunch surrounded by wildlife.

<b>Day 12</b>	<b>12 Feb 2015</b>	<b>Ngorongoro Crater ~ Tarangire National Park</b>
---------------	--------------------	--

This morning you will drive to Tarangire National Park, where you will have lunch at **Tarangire Sopa Lodge** before spending the afternoon on a game drive. You will spend **1 night** at the lodge on a **full board basis**.

Arrive: 12 Feb 2015 | Depart: 13 Feb 2015

1 night (all meals)



### Tarangire Sopa Lodge

Tarangire Sopa Lodge provides 75 spacious rooms furnished with a mini bar and 2 queen size beds including mosquito nets. The Lodge lies hidden among the kopjes and surrounded by ancient baobab trees. Tarangire is the home of one of the greatest concentration of elephants in Africa, and showcases other game including the elusive leopard. Over 400 bird species can be spotted here as well. Some facilities on offer are a gift shop, swimming pool, laundry and a babysitting service.





### Tarangire National Park

One of the best dry season parks in the region, from July through to October an enormous amount of wildlife is drawn inside Tarangire to access the water from the Tarangire River and the Silale Swamps, allowing for very rewarding game viewing experiences. The park is home to some of the largest elephant herds of East Africa, and the scenery is particularly popular for the wide open, Serengeti-like plains, decorated with enormous and commanding Baobab trees.



**Day 13 - 15**                      **13 - 15 Feb 2015**                      **Tarangire National Park ~ Zanzibar**

This morning you will leave Tarangire behind and drive back to Arusha where you will catch your flight to Zanzibar departing at **14h30**. On arrival at **15h45** you will be met and transferred to the Zanzibar coast where you will spend **3 nights** at the **Mapenzi Beach Club** on a **fully inclusive basis**.

**Arrive: 13 Feb 2015 | Depart: 16 Feb 2015**                      **3 nights (all meals and drinks)**



### Mapenzi Beach Club

Mapenzi Beach Club is set in 4 hectares blessed with a long white beach and tropical gardens, on the east coast of Zanzibar. There are 30 deluxe beach front, 36 superior and 21 superior garden bungalows, charmingly furnished in traditional East African style. All rooms have large private verandas and large bathrooms, and are fitted with a canopy bed with mosquito net, individual climate control, safe, mini bar, coffee and tea making facilities, and hairdryers and shaver plugs. All meals, snacks throughout the day, and a full range of beverages are inclusive and provided from a choice of three restaurants and two bars.

### Zanzibar

The Zanzibar Archipelago has lured travellers to its pristine, white beaches for centuries. The main island of Zanzibar (correctly named Unguja), has a plethora of accommodation options, ranging from rustic beach bungalows to large and glitzy resorts, and can offer something to everyone's taste. Sandy beaches run the length of the coast, shaded by green palm trees, and caressed by turquoise waters.



**Day 16**                                      **16 Feb 2015**                                      **Zanzibar ~ Stone Town**

You will be transferred today to Stone Town, where you will be able to explore the alleys and markets of this ancient town. You will spend **1 night** at the **Zanzibar Serena Inn** on a **bed and breakfast basis**.



Arrive: 16 Feb 2015 | Depart: 17 Feb 2015

1 night (breakfast)

**Zanzibar Serena Inn**

Idyllically situated on the sea-front of ancient Stone Town, and flanked by an exotic mix of sultan's palaces, Portuguese forts, ancient dhow harbours, and bright bazaars, the Zanzibar Serena Inn is a haven of tranquillity and opulence amongst the bustle of one of Africa's most ancient and most enchanting towns. A member of the prestigious Small Luxury Hotels of the World, the inn has been styled to represent the epitome of Swahili style, ethnic elegance and Arabic opulence. Adorned with arched niches, antique plates and brass lamps, and featuring traditionally carved furniture with basket weave and ceramic inlay, the rooms are predominantly royal blue and white.

**Stone Town**

The capital of Zanzibar is Zanzibar Town, in which Stone Town is a bustling, energetic and fascinating ancient part. With narrow mazes as streets, and intricately carved doors decorating the white-washed buildings, Stone Town invites you to explore its inner zones, and many an hour can be spent taking it all in. The sights and sounds, and the spicy smells, somehow remind you of a time long ago, and on exiting the web of alleys you feel as if you have left behind another world in another age.

**Day 17****17 Feb 2015****Stone Town**

You will be transferred back to Zanzibar Airport today in time for your Coastal Aviation flight departing for Dar Es Salaam at **08h00**. You will land in Dar Es Salaam at **08h30**, and then board flight **PW4481** departing at **10h25** for Nairobi, landing at **11h45**. In Nairobi you will connect with flight **EY642** departing at **14h30** for Abu Dhabi, landing at **20h25**.

**18 Feb 2015****Day of Departure**

You will board flight **EY454** departing Abu Dhabi at **21h50**, landing in Sydney at **18h45** on Thursday 19 February.

**End of Services**

Thanks very much for confirming your travels with African Ubuntu Safaris. We know you will have a fantastic time, and look forward to hearing about it when you return!

Kind regards

*African Ubuntu Safaris*[www.africanubuntusafaris.com.au](http://www.africanubuntusafaris.com.au)

Tel: +61 2 9877 6789

Mob: +61 423 813 805

For full terms and conditions please visit: <http://www.africanubuntusafaris.com.au/terms-and-conditions.html>